

Digital Signage Check-Out



IN STORE

Digital Signage

Banner



Duration

1 week

Media Booking

6 weeks

Nice to know

- The time of a TV spot is 6 secondes.
- SOT : 20%
- Format : Landscape

Post reporting

Reportings are available 6 weeks after the end of the activation and available via an online platform. Request access to our Account Managers.

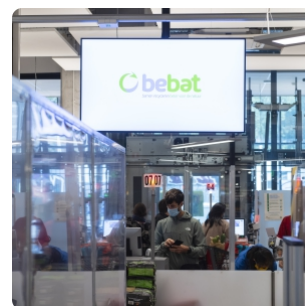
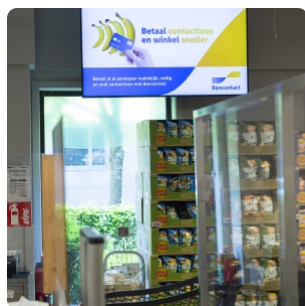
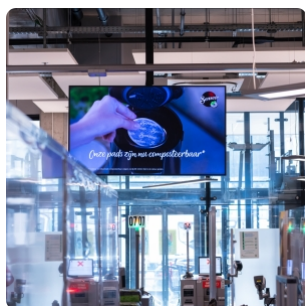
KPI 1 - Reach category (Total Reach)

KPI 2 - % New Buyers of promoted product/range (New Buyers Ratio)

KPI 3 - Category turnover evolution (Category Ratio)

KPI 4 - Promoted product/range turnover evolution (Promoted Product Ratio)

Sample pictures



OBJECTIVES

BRAND AWARENESS



CALL TO ACTION



BRAND POSITIONNING

